

SUBJECT EXAMINATION PROGRAM

INTERNATIONAL FOUNDATIONS OF MEDICINE® (IFOM®)

CLINICAL SCIENCE EXAMINATION

EXAMINEE PERFORMANCE REPORT

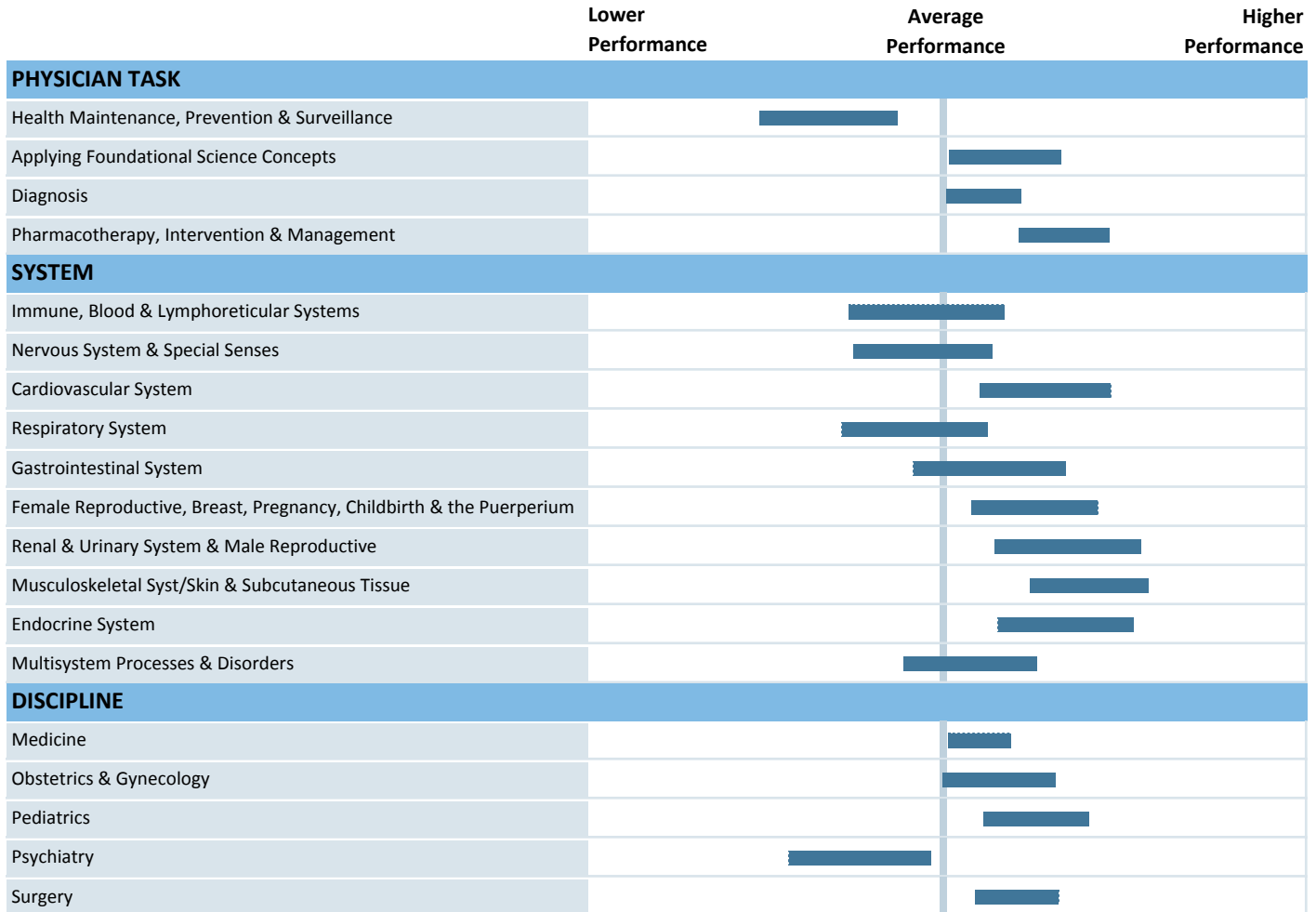


Name: ALSAAIDEH, QAIS AREF MINWER

ID: A-3628913

Total Test Equated Percent Correct Score: 60

Test Date: May 11, 2022



The above Performance Profile is provided to aid in self-assessment. The vertical line represents the average performance of the IFOM® CSE International Comparison Group (ICG) on the total test. Performance bands indicate areas of relative strength and weakness. Some bands are wider than others. The width of a performance band reflects the precision of measurement: narrower bands indicate greater precision. Striped shading of a band indicates that your performance band extends beyond the displayed portion of the scale.

Small differences in the location of bands should not be over-interpreted. If two bands overlap, performance in the associated areas should be interpreted as similar. Because the IFOM® CSE is designed to be integrative, many items contribute to more than one content area. As a consequence, caution should be used when interpreting differences in performance across content areas and in relation to the average performance of the IFOM® CSE ICG.

Additional score interpretation information, including information about the ICG, is provided in the IFOM® CSE Score Interpretation Guide (www.nbme.org/ifomcse2022).